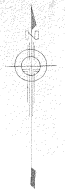


Road Allowance

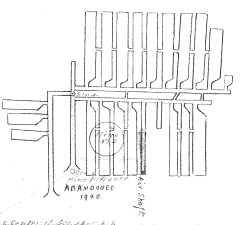
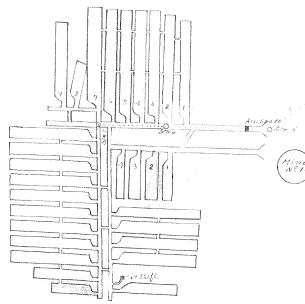
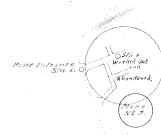
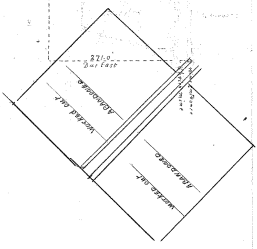
Mineral Rights on the N.E. 1/4 of Sec. 22 - Township 23N - Range 23E - Recorded in the name of John Mitchell of Edgemoor, S.D.
 Mining Operations are conducted by persons whose names are shown in connection with the different Survey Locations.
 Scale: 1 inch = 100 feet
 N 1/2 Sec 22



M1 Mine operated by R. Dixon Surveyed Sept. 29th 1926				M2 Mine operated by R. Adams Sept 27th 1926				M3 operated by J. St. John's Co. Dec 1st 1926			
Station	Distance	Bearing	Remarks	Station	Distance	Bearing	Remarks	Station	Distance	Bearing	Remarks
1	20.0	S 89° 30' W	Corner of Sec 22	1	20.0	S 89° 30' W	Corner of Sec 22	1	20.0	S 89° 30' W	Corner of Sec 22
2	20.0	S 89° 30' W	Corner of Sec 22	2	20.0	S 89° 30' W	Corner of Sec 22	2	20.0	S 89° 30' W	Corner of Sec 22
3	20.0	S 89° 30' W	Corner of Sec 22	3	20.0	S 89° 30' W	Corner of Sec 22	3	20.0	S 89° 30' W	Corner of Sec 22
4	20.0	S 89° 30' W	Corner of Sec 22	4	20.0	S 89° 30' W	Corner of Sec 22	4	20.0	S 89° 30' W	Corner of Sec 22



2.5 x 5
 2.5 x 10
 2.5 x 15



Dup